

Digital Pathology Solutions

Whole Slide Image Scanning Systems

Scott Blakely
Digital Pathology Business Development at Hamamatsu
June 5, 2025

This presentation is intended for use in the US



Agilent and Hamamatsu Photonics

A Strong Collaboration to Advance Digital Pathology Solutions

With a shared vision to support the needs of pathology labs through advanced digital pathology solutions, we have collaborated with Hamamatsu, a leading provider of whole slide imaging systems.

Our mutual goal is to provide digital pathology technologies to enhance workflows, test quality, and promote clinical utility. This effort enables labs to adopt digital technologies in an open, flexible, and scalable manner.

Hamamatsu's range of scanners (including the NanoZoomer S360MD medical device and Hamamatsu research use only scanners) are now available through Agilent as part of an end-to-end digital pathology solution.



How Can Your Lab Address These Challenges?

An efficient staining solution alongside state-of-the-art whole slide scanning systems

Staining Management from Agilent



Dako Omnis Flex
Ready-to-Use (RTU) Reagents

Scanning Systems from Hamamatsu



NanoZoomer S540*



NanoZoomer S360MD



NanoZoomer S60*



NanoZoomer S20*

**Hamamatsu NanoZoomer S540, S60, and S20 are For Research Use Only (RUO) products and are not indicated for use in patient diagnosis*

Key features for the NanoZoomer® range



S540 Capabilities*

Key Features

Sakura & Leica rack compatibility

Continuous loading

Z-stacking

540 slide capacity

Scanning Speed

20x mode Approx. 30s

40x mode Approx. 30s

Daily Max Throughput

Up to 1,000 slides



S360MD Capabilities

Key Features

High-throughput

1D & 2D barcode reading

Z-stacking

360 slide capacity

Scanning Speed

20x mode Approx. 30s

40x mode Approx. 30s

Daily Max Throughput

Up to 1,000 slides



S60 Capabilities*

Key Features

BF and FL options

2"x3" slide compatibility

Z-stacking

60 slide capacity

Scanning Speed

20x mode Approx. 60s

40x mode Approx. 150s

Daily Max Throughput

Up to 200 slides



S20 Capabilities*

Key Features

Sakura rack compatibility

Compact, benchtop design

Z-stacking

20 slide capacity

Scanning Speed

20x mode Approx. 30s

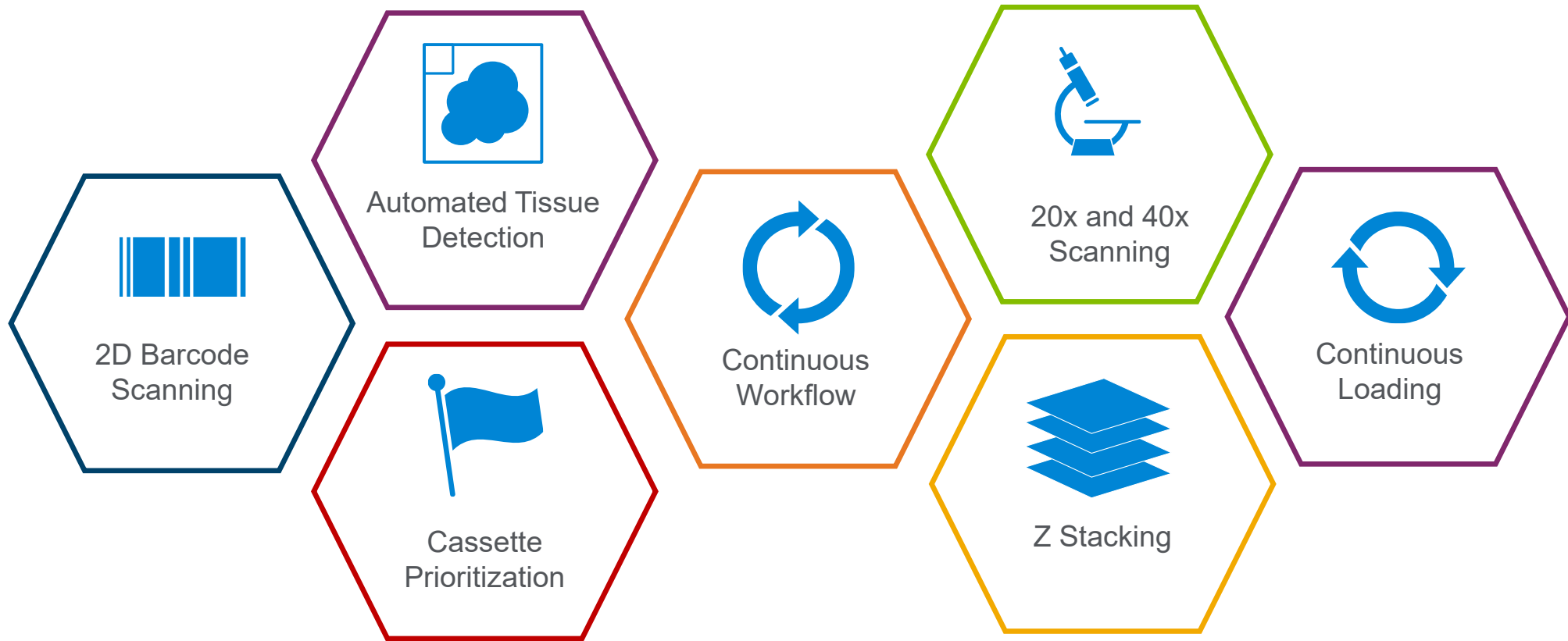
40x mode Approx. 30s

Daily Max Throughput

Up to 700 slides

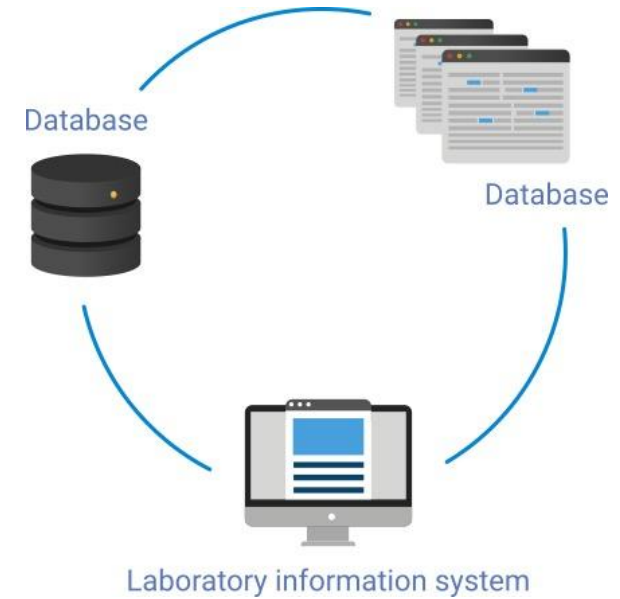
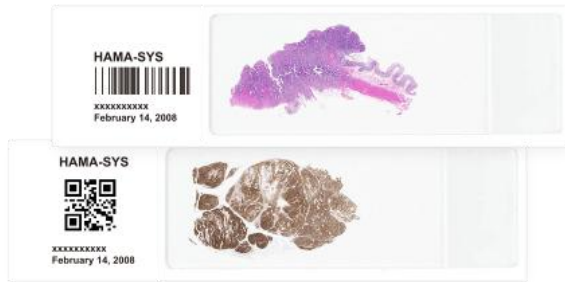
*Hamamatsu NanoZoomer S540, S60, and S20 are For Research Use Only (RUO) products and are not indicated for use in patient diagnosis

NanoZoomer® range from Hamamatsu





1D & 2D Barcode Scanning



Assures correct match of tissue sample with patient

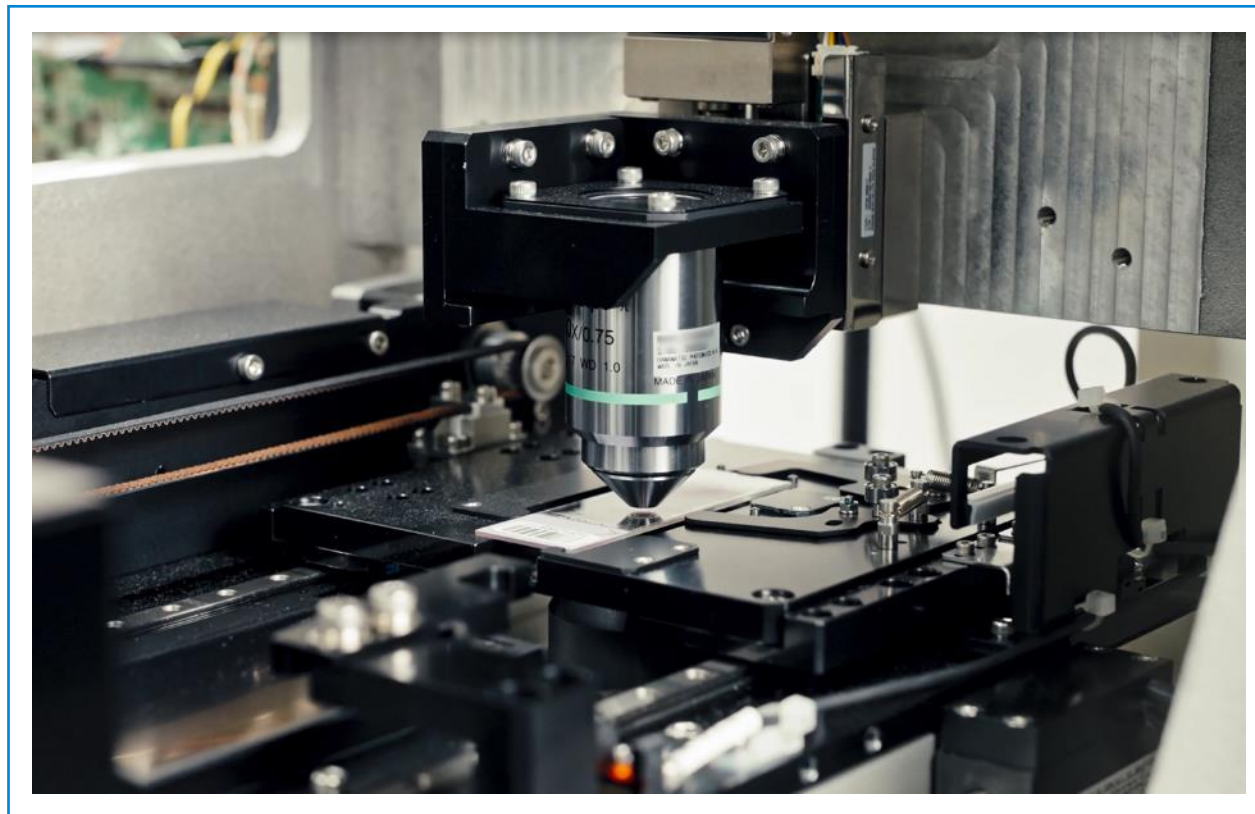
Seamless digital pathology workflow

Integration with laboratory information and image management systems



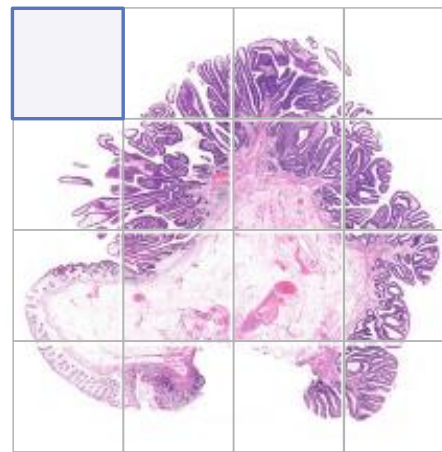
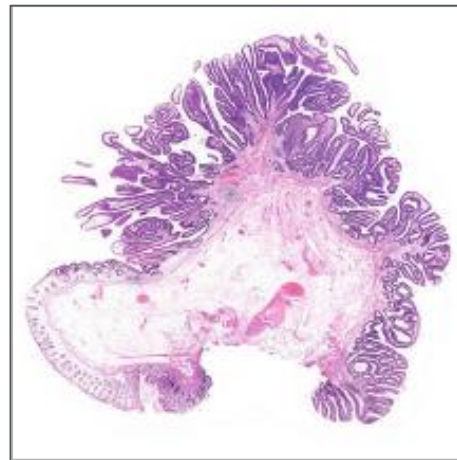
20x and 40x Scanning

- 20x and 40x scanning using 20x objective for increasing depth of focus
- Image resolution: $0.46\mu\text{m}/\text{pixel}$ at 20x, $0.23\mu\text{m}/\text{pixel}$ at 40x
- Choose between 20x or 40x scanning mode for users' preference or file size control
- Same fast scanning time when scanning at 20x or 40x



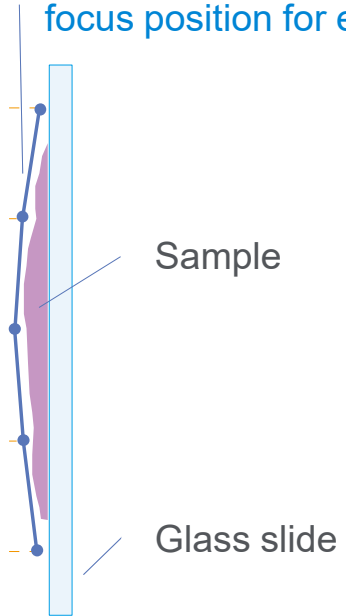


Automated Tissue Detection



Scanning each area with the appropriate focus setting

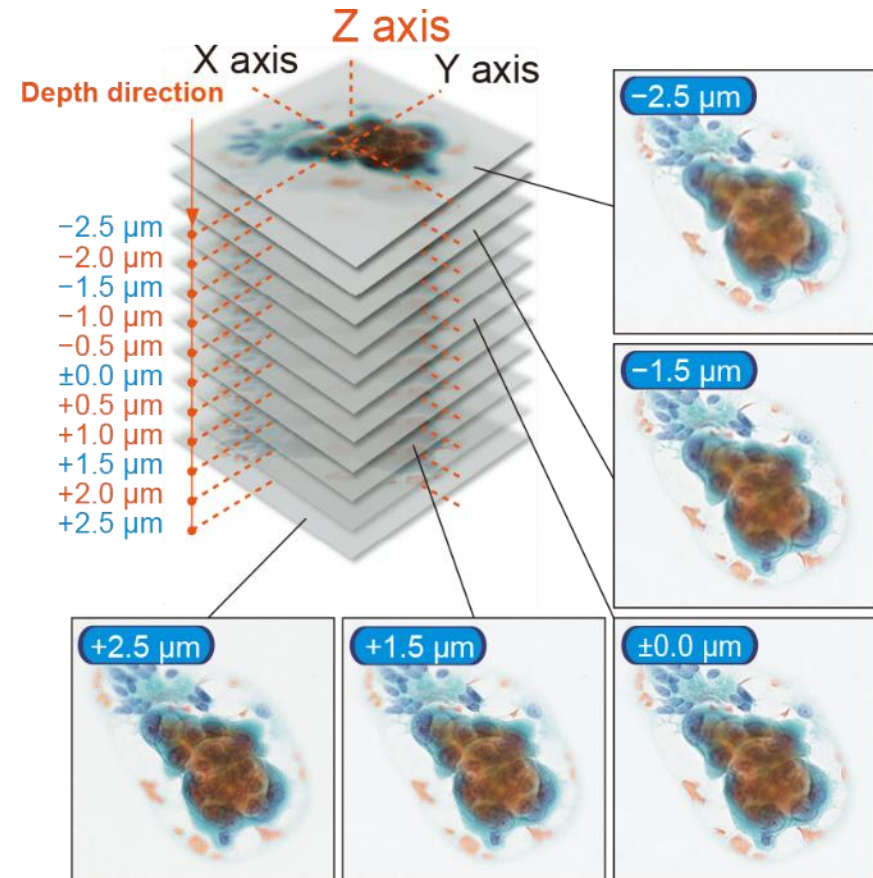
Setting the most appropriate focus position for each area



Identify samples individually and delineate scanning area on slides

Customizable scan profile to change threshold range of detection as user likes

- Focus on different depths of a sample for volumetric information
- Overcomes focus challenges of thick tissues
- Capture more data than single-layer scans



FEATURE HIGHLIGHT: NANOZOOMER S540 – CONTINUOUS LOADING



SAKURA RACK

20 slides
360 capacity



LEICA RACK

30 slides
540 capacity



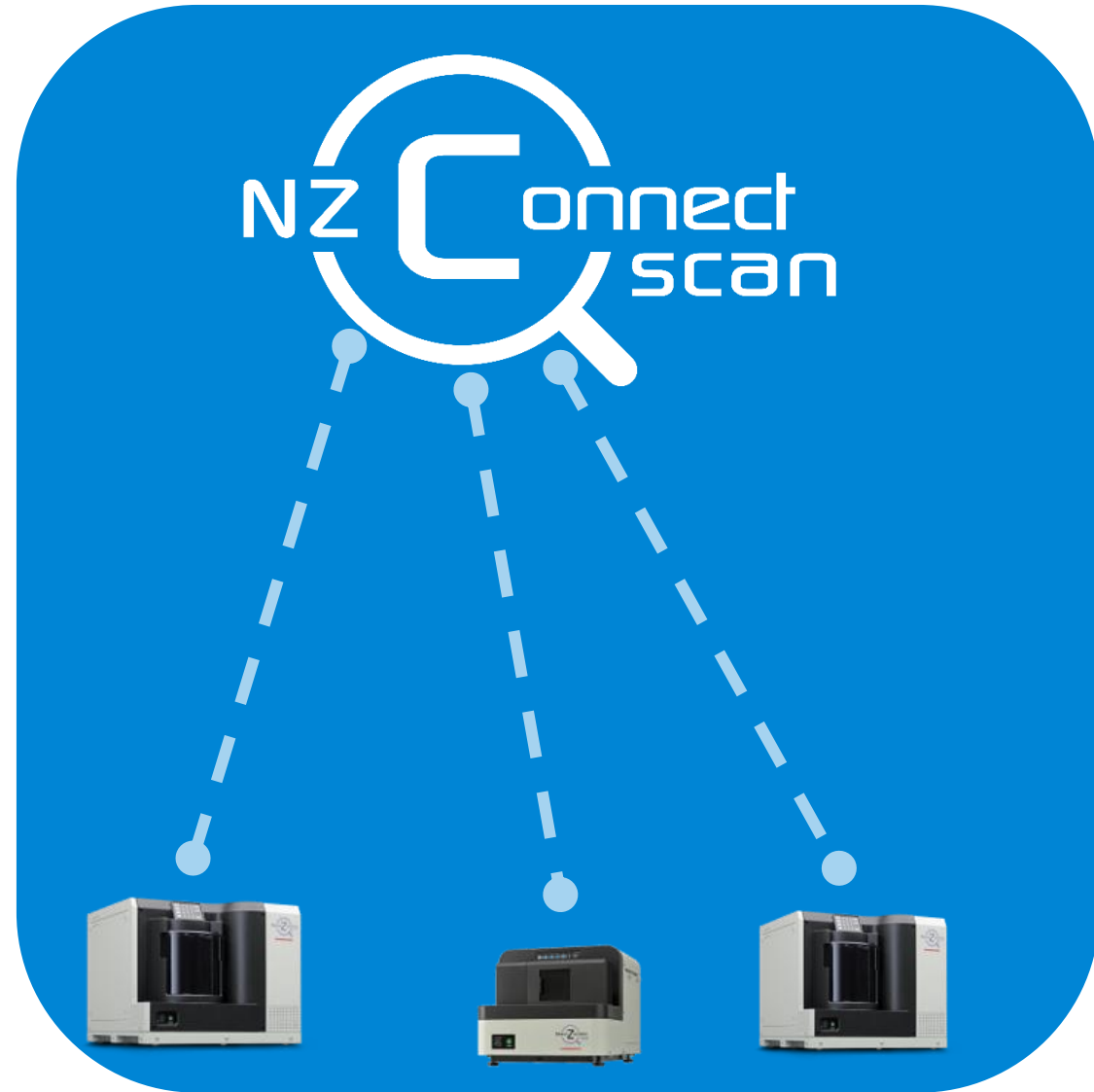
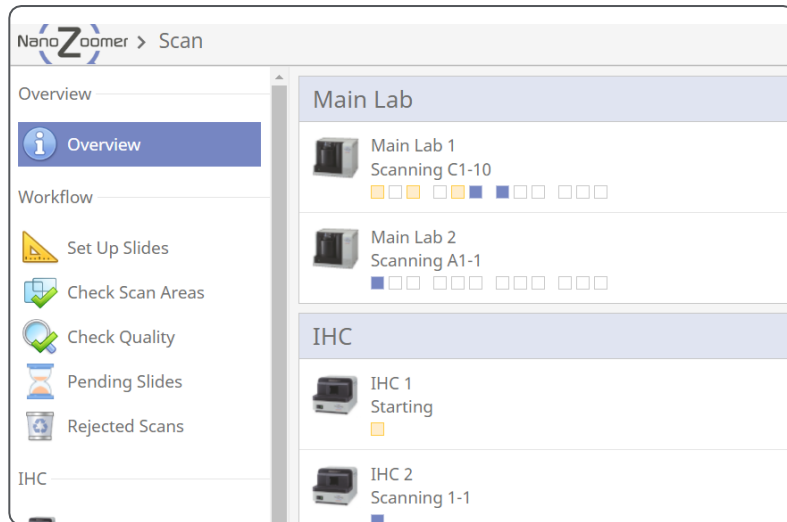
CONTINUOUS LOADING

Scanning doesn't stop
during rack exchange

For Research Use Only: Not for use in diagnostic procedures.

NZConnect Scan

- Intuitive viewing software
- Annotation ability
- Multiview function
- Capability to view other file formats



For Research Use Only: Not for use in diagnostic procedures.

Stain, Scan, Sign Out

Agilent
Dako

